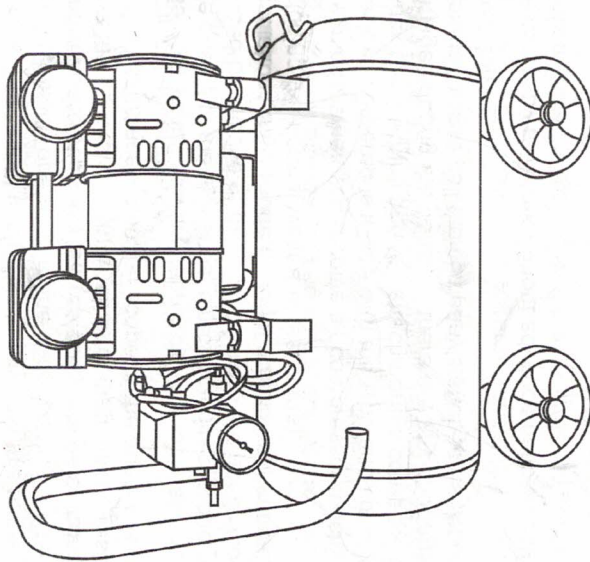


**OIL FREE SILENT AIR COMPRESSOR
INSTRUCTION MANUAL**



1、 Overview

- 1.1 This manual describes numerous oil free silent air compressor (hereinafter referred to as the compressor) how to use the right method. To ensure the safe and economical operation of compressor, and prolong its working life.
- 1.2 Machine be sure to read the manual carefully before running, so as to guarantee the compressor properly use, operation and maintenance from the start. Maintenance requirements include the use of measures and methods of the compressor in good condition.
- 1.3 Operators should refer to this manual at any time, to ensure that the compressor according to the requirements of this manual for operation and maintenance, strictly abide by the relevant safety regulations.
- 1.4 This product from the date of delivery, warranty period is 3 months. But limited to strictly comply with this manual for installation and operation of the user. Warranty, if the product is abnormal, the company will replace parts paid or unpaid. Only have the right to confirm whether damage is the result of the quality assurance within the scope of the agency is our technical department.
- 1.5 The quality of maintenance, direct or indirect property damage caused by misuse or physical damage are not included in the calculation, only include material and component damage (not including the normal wear and tear parts).
- 1.6 The goods, when you receive air compressor machine, please check you ordered is in line with the type and specification. Check the machine and the attachment is complete or damaged during the transit. If there are any shortage or damage, please call the company's after-sales service or your direct supplier.
The company reserves without advance notice modify the rights of this manual.

2、 The product overview

This company produces the oil-free air compressor, because can provide air compressor without oil pollution

of pure environmental protection is widely used in dental, aquaculture, food, medicine, health, beauty, chemical, electronic, scientific experiments, etc (can also be used as a vacuum pump).

Its advantages are as follows:

- 2.1 The machine design and lightweight, mobile and flexible, simple operation, convenient maintenance.
- 2.2 Cabin air precision filter device, the convenient user use.
- 2.3 Piston ring design and manufacture of a new environmental protection material, and the wear coefficient. Has the good self-lubricating, replaced the traditional piston machine adopts the history of the lubricating oil. More important is not output oil's share of the harmful material, to avoid the use of compressed air in the oil removal device. Economic benefit is remarkable.
- 2.4 The cylinder liner with advanced surface hardening treatment process. Greatly reduced thickness, thus speeding up machine cooling function. Effectively improve the surface of the density and wear resistance. To extend the service life of the parts.
Reduce the maintenance time and cost.
- 2.5 With double the shaft motor optimization design to ensure that the compressor can achieve high power, high efficiency, high reliability, and the advantages of compact structure.
- 2.6 Inlet and exhaust valve is refined using imported material.
Because of adopting the mute design, thus greatly improve the unit volume flow rate, reduce vibration and noise.

3、The main performance and technical parameters

model	The motor power (W/HP)	Voltage/frequency (V/Hz)	Speed (rpm)	Exhaust pressure rating (Mpa)	Nominal displacement (L/min)	Storage tanks (L)	The noise (dB)	The weight (Kg)
HDW550-10D	550/0.75	220/50	1440	0.8	60	10	48	16
HDW750-10D	750/1	220/50	1440	0.8	80	10	50	18
DHW750-24D	750/1	220/50	1440	0.8	80	24	50	20
HDW2X750-50D	2×750/2 ×1	220/50	1440	0.8	160	50	53	55
HDW1100-24D/S	1100/1.5	220/380/50	1440	0.8	150	24	55	21
HDW1500-24D/S	1500/2	220/380/50	1440	0.8	180	24	62	25
HDW2X1500-50D/S	2×1500/2 ×2	220/380/50	1440	0.8	360	50	65	71
HDW3X1500-110D/S	3×1500/3 ×2	220/380/50	1440	0.8	540	110	68	150
HDW4X1500-170D/S	4×1500/4 ×2	220/380/50	1440	0.8	720	170	70	180

The company to product research, improving continuously, have right to design changes, specifications subject to change without prior notice.

4、Direction for use

- 4.1 Puts switch button ON or Auto position, connected to the power, the machine starts, if the machine can't start, please the pressure within the gas tank has dropped below 0.4 Mpa can start.
- 4.2 Will switch in the OFF position, cut OFF the power and stop the machine works.
- 4.3 Relief valve mounted on the switch, when the pressure inside the storage tanks more than 0.88 Mpa, the safety valve will ring and exhaust pressure, the relief valve to ring please repair the pressure switch, make the air pressure switch work pressure does not exceed the rated pressure.
- 4.4 After every stop, please gently with fingers to resist oil-water separator under the thimble, put out all of the sewage in the oil and water separator (some users may need not install oil-water separator, do not have the use, at the same time also does not have the function of item 5 below).
- 4.5 From vent gas pressure can be regulated according to the pressure regulating knob on the oil-water separator, turn the knob clockwise, increasing the discharge pressure, the maximum can reach the pressure inside the storage tanks, counter-rotating reduce exhaust pressure, minimum close air supply. Note: when turning to the limit position, strong rotation, to prevent damage.
- 4.6 When need to adjust the air pressure switch work pressure, please down air pressure switch shell, adjust the pressure switch in the rotation of the screw, increasing work pressure

clockwise, counterclockwise against reduce the pressure of work. Note: cut off the power before operation.

Warning: must not exceed the rated working pressure exhaust pressure 0.8 Mpa, lest produce risk.

5. Use requirement

- 5.1 Should read the instruction manual before use.
- 5.2 Air compressor should be stored in a dry, ventilated room, strictly to avoid perishable, easily rotten, flammable, and chemicals. Storage period from the date of delivery should be not more than three years, more than storage period should be check the maintenance, the necessary test.
- 5.3 The machine is prohibited collision, when using, must be placed straight, to pay attention to prevent in the tilt and inversion, so as to avoid failure.
- 5.4 In order to ensure the safety and prolong the service life of machine. The machine should be placed in the air to circulate and clean, cool place, try to avoid in high temperature, air pollution, dust, or have oil fuel gas environment use.
- 5.5 Before work power supply connection should be sure to ensure that the machine is closed. Turn on the switch power supply is connected to a formal operation. The power supply voltage shall not be less than 10% or higher than the rated working voltage.
- 5.6 Air compressor should prevent wet by water, and shall not be placed in damp gloomy and cold place, to avoid electrical failure.

- 5.7 Please do not touch the high voltage components during operation, such as cylinder head, exhaust pipe, check valve, etc., so as to avoid burns.
- 5.8 When power is less than or equal to 750 w, the power supply cable cross-sectional area should not be less than 1 cubic millimeter, power greater than 750 w, power cable wire cross-sectional area should not be less than 2 cubic millimeter, and cable should not be too long. When power is greater than 1.5 KW, please according to the standard electrical wiring is carried out. And are connected by a skilled electrician.

6. Maintain protection

- 6.1 All maintenance work before, should cut off power supply to the best of the air in the store jar, side by side or easy to cause dangerous.
- 6.2 Please keep the machine clean, should be to scrubbing machine maintenance regularly
Sewage is put in the storage tanks, at least once a week, when water was eliminated, the air tank within the air pressure should be less than 0.1 Mpa
- 6.3 Regularly check whether the safety valve is flexible, the relief valve can be easily exhaust, press the valve stem can be reset immediately
- 6.4 Every 500 hours, please will filter down to clean or replace air filter, and the air valve down clean, every 5000 hours using the replacement cup.

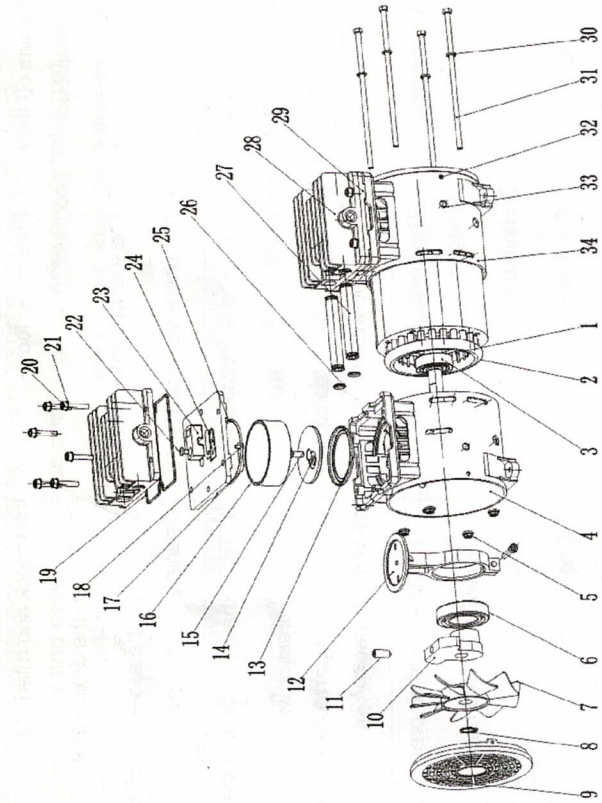
6.5 Gas-holder once every two years to do pressure test, check inside and outside surface once a year, there are serious rust, dent or withstand voltage test is unqualified, storage tanks for scrap processing.

7、Breakdown maintenance table

Warning: before any maintenance or repair work, should be cut off power supply and the air is put in the store jar, otherwise easy to damage.

The fault phenomenon	Possible reasons	Processing method
Motor can't turn without any sound	<ol style="list-style-type: none"> 1. No electricity 2. The pressure switch 3. The blown fuse 4. The overload protector in protecting state 5. Pressure switch is damaged 6. Motor stator winding burn 	<ol style="list-style-type: none"> 1. Check the plug and switch 2. Switch is reset and check the reason 3. Replace the fuse 4. Will restart after waiting for motor cooling 5. Contact the reliable service center 6. Replace the stator
Motor current sound but not running or speed is slow	<ol style="list-style-type: none"> 1. The voltage is too low 2. Electrical wire short circuit or open circuit in circles 3. The check valve or pressure switch is damaged 	<ol style="list-style-type: none"> 1. Check the voltage, not less than 10% rated voltage 2. Contact the reliable service center 3. Contact with reliable service center
Overload protector repeatedly cut off power supply	<ol style="list-style-type: none"> 1. The voltage is too low 2. Poor ventilation, the temperature is too high 	<ol style="list-style-type: none"> 1. Check the voltage, not less than 10% rated voltage 2. Put the air compressor in a well-ventilated place

After turn off the air compressor pressure drop	<ol style="list-style-type: none"> 1. Pneumatic loose connection, a leak 2. The exhaust valve open 3. The check valve leakage 	<ol style="list-style-type: none"> 1. Check and ruled out 2. Tighten the drain valve 3. Remove the assembly after cleaning, no change
Exhaust gas contains a lot of water	<ol style="list-style-type: none"> 1. The air tank contains large amounts of water 2. The humidity is too big 	<ol style="list-style-type: none"> 1. The exhaust air tank in the water 2. Air compressor will be moved to the use of low temperature, or the use of oil-water separator
Air compressor operation	<ol style="list-style-type: none"> 1. The pressure switch is damaged 2. Have a leak 	<ol style="list-style-type: none"> 1. The change of air pressure switch 2. Review and ruled out
Air compressor vibration	<ol style="list-style-type: none"> 1. The fasteners loose 2. Bearing pads of damage or loss 	<ol style="list-style-type: none"> 1. Check and ruled out 2. Replace the floor mat
Pressure cannot rise or not	<ol style="list-style-type: none"> 1. The exhaust valve open 2. Empty filter clogging 3. The flat 4. The valve bad or have a foreign body or leak 5. Piston ring excessive wear 	<ol style="list-style-type: none"> 1. Tighten the drain valve 2. Clean element changes 3. Check and ruled out 4. Clean or replace 5. Update the product



13	Piston cup
14	clamp
15	M6X16 inner hexagon countersunk head screws
16	cylinder
17	Intake valve slice
18	Strengthen the gasket
19	Cylinder head seal valve
20	M5X25 inner hexagon countersunk head bolt
21	5 flat mat
22	M4X6 cross trough pan head screws
23	Limit block
24	Out of the air valve slice
25	Cylinder seal valve
26	Connecting the aluminum tube o-rings
27	Connection aluminum tube
28	Cylinder head
29	Valve plate
30	05 play mat
31	M5X150 hexagonal cross slot bolt
32	ST2.2 cross trough pan head screws
33	The right fan
34	The right housing

Number	The parts name
1	The rotor
2	The stator
3	6203 z bearing
4	The left box body
5	The M5 hex flange surface nut
6	Deep groove ball bearing 606
7	Left the fan
8	014 shaft end ring
9	The wind hood
10	The crank (2)
11	M8X20 hex screw set 1
12	Connecting rod

