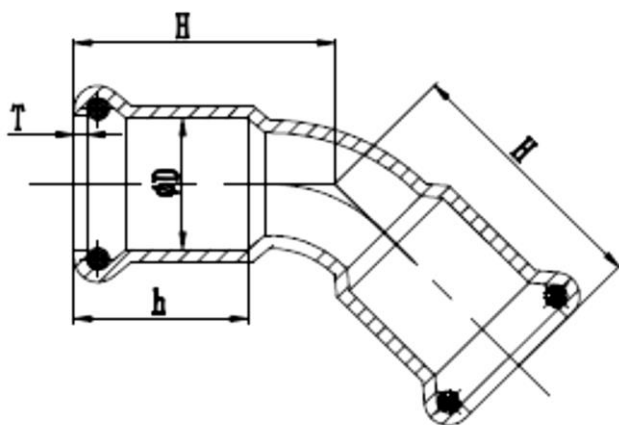


## Koleno 45° (oblouk), lisovací, F/F



- Kolena 45° (oblouk), lisovací, F/F
- Materiál: nerezová ocel DIN 1.4301 (AISI304), tl. stěny 1,5 mm
- Typ O-kroužku FKM



	<b>D (mm)</b>	<b>H (mm)</b>	<b>h (mm)</b>	<b>T (mm)</b>	<b>Hmotnost (g)</b>
PE_15/45FF	15	30	20	1,5	39
PE_18/45FF	18	32	21	1,5	48
PE_22/45FF	22	35	21	1,5	68
PE_28/45FF	28	40	23	1,5	90
PE_35/45FF	35	47	26	1,5	130
PE_42/45FF	42	55	31	1,5	183
PE_54/45FF	54	66	36	1,5	282

WATER4LIFE s.r.o.

Prušánky 352

696 21 Prušánky

Czech Republic

E-mail: info@water4life.cz

Tel: +420 518 374 614

Fax: +420 518 374 616

VAT number: CZ 29289971

Reference number: C 71338, kept by the Regional Court in Brno, Czech Republic

